



TCITM
WHERE YOUR
WORLD MATTERS

TruDurance

Architectural Powder Coatings

AAMA 2603

9000 Series

AAMA 2604

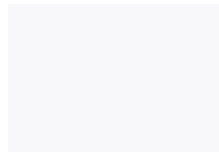
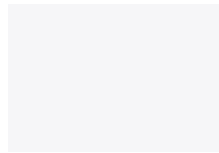
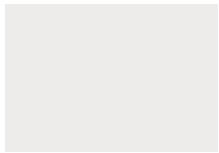
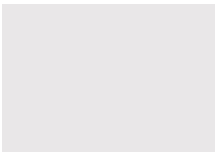



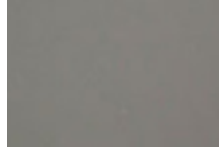


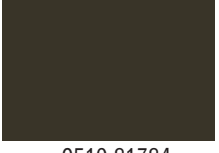

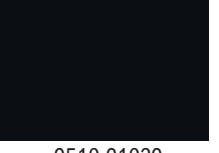
10000 Series

AAMA 2605

11000 Series

To Order: 800.533.9067 • 229.937.5411
For More Information: www.tcipowder.com

AAMA 2603 Stock Colors

					
9910-9035 Crystal White	9910-9897 Sky White II	9510-92706 Patio White	9610-9021 Pompano White	9820-12266 Miracle Almond	9810-1048 Sandlewood
					
9810-1049 Mesa Tan	9610-7040 Storm Grey	9810-7042 Electric Grey/ANSI 70	9810-6046 Ivy Green	9810-5413 Bahama Blue	9910-5054 Ocean Blue
					
9611-01069 SD Statuary Bronze	9510-81784 Southern Bronze	9030-90922 SD Flat Black	9510-91039 SD Mineral Black	9002-9324 JA6A Tex Polyester	9310-90160G SD Black Polyester

AAMA 2603 Stock RAL Colors

					
9840-11974R ♦ RAL 1015 Light Ivory	9841-01492R ♦ RAL 9006 White Alum.	9841-01493R ♦ RAL 9007 Grey Alum.	9840-71977R ♦ RAL 7035 Light Grey	9840-72007R ♦ RAL 7037 Dusty Grey	9840-72045R ♦ RAL 7005 Mouse Grey
					
9840-72047R ♦ RAL 7043 Traffic Grey	9840-72011R ♦ RAL 7012 Basalt Grey	9840-72121R ♦ RAL 7016 Anthracite Grey	9840-11955R ♦ RAL 1018 Zinc Yellow	9940-11910R ♦ RAL 1023 Traffic Yellow	9840-2461R ♦ RAL 2004 Pure Orange
					
9840-30202R ♦ RAL 3020 Traffic Red	9840-30200R ♦ RAL 3002 Carmine Red	9840-50917R ♦ RAL 5015 Sky Blue	9840-50955R ♦ RAL 5017 Traffic Blue	9840-80992R ♦ RAL 8011 Nut Brown	9840-81018R ♦ RAL 8019 Grey Brown

Clears

10110-02225 ■ AAMA 2604 10 Clear	10410-02230 ■ AAMA 2604 40 Clear	10710-02226 ■ AAMA 2604 70 Clear
10910-02227 ■ AAMA 2604 90 Clear	11510-02150R ▲ ■ AAMA 2605 Med Gloss	11910-01573R ▲ ■ AAMA 2605 Gloss Clear

Clear Coat and Fill Quantities Key

- ▲ Meets AAMA 2605 Specifications
- ◆ R 25lb Box
- 45lb Fill Quantity
- Clear Coat Required

Additional Notes

- *Some colors cannot be formulated to meet AAMA specifications due to pigment limitations
- *AAMA 2605 are made to order

AAMA 2603 Stock Metallic Colors



9911-01304 ● ■
Mirror Silvadillo



9711-0259 ● ■
Bright Argent



9811-0540 ● ■
Stardust Silver II



9511-01405 ■
Anodized Aluminum



9211-01410
SD Oil Rubbed Bronze



9411-01409
SD Quaker 40 Bronze



9811-01408
SD Starlight Black



9411-01414
Satin Nickel



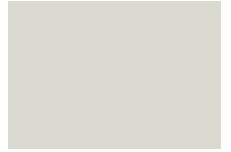
9611-01208 ●
Blonde Gold



9711-01407
SD Harvest Gold



9921-01023
Coppertop

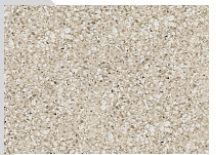


9911-01406 ●
Black Chrome

AAMA 2603 Stock Multicolor



9336-10146M
LC Pebble



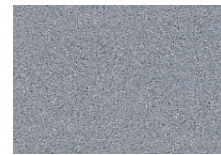
9416-9503M
Luna



9306-10278M
Terra Sand



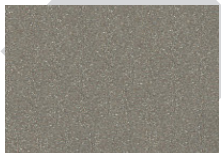
9016-1559M
Sandstone



9316-7658M
Granite Multi



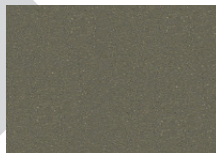
8016-10444M
Speckled Pearl



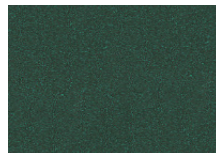
9016-8953M
Mojave



9416-7633M
Mocha



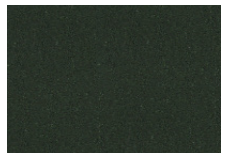
8016-8637M
Moccasin



8016-60074M
Mint Speckle



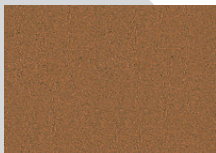
9016-60110M
Jade Crater



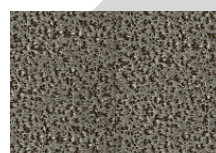
8006-60034M
Jade



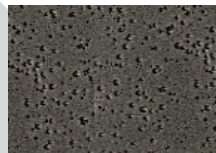
8016-8853M
Moon Dust



8016-2072M
Clay Pot



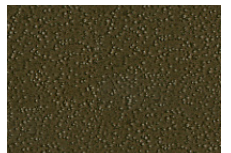
8208-0422M ●
Bronze Silverado



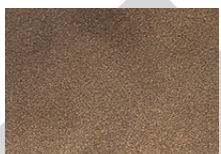
80314-0284 ●
Silverado II



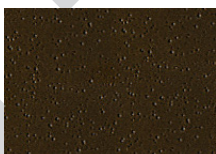
8118-0611M ●
LC Bronze Age



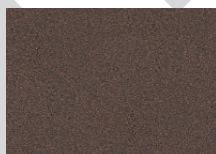
8016-8358
Bronze Age III



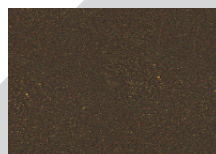
9016-80072M ●
Pompeian Gold II



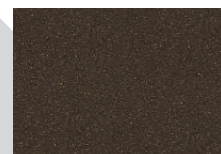
8118-0610M ●
SG Ultra Bronze



9116-80184M
Old Bronze



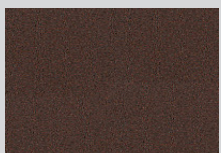
8016-8799M
Speckled Oak



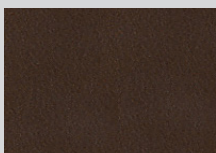
8016-8855M
Speckled Bronze



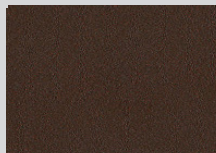
9316-8998M
Pecan



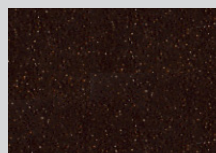
9016-8630M
Copper Tex II



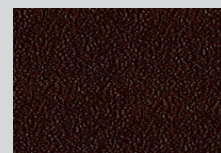
8016-8939M-1
Cappuccino II



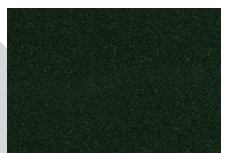
9016-8336
Burst Rust



9316-8644M-2
Java II



8103-8675M
Textured Copper



8006-9982M
Grey Speckle

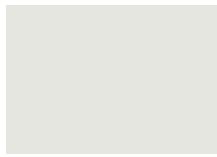
AAMA 2604 Stock Colors



10510-91602A
AAMA 2604
Satin White



10310-92050
AAMA 2604
Polar White



10310-91095
AAMA 2604
Bone White



10510-11712
AAMA 2604
RAL 1013



10510-12082A
AAMA 2604
Sandstone



10310-71747
AAMA 2604
RAL 7038



10310-71751
AAMA 2604
RAL 7045



10310-30353
AAMA 2604
Burgundy



10310-61545
AAMA 2604
Teal



10420-61537
AAMA 2604
Patina Green



10310-61074
AAMA 2604
RAL 6005



10310-51228
AAMA 2604
Interstate Blue



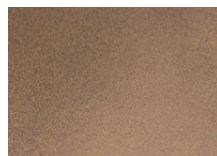
10310-71748
AAMA 2604
RAL 7006



10510-81101A
AAMA 2604
Toffee



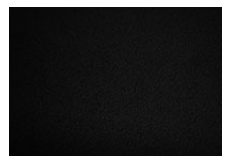
10610-81102A
AAMA 2604
Chestnut Brown



10511-0997
AAMA 2604
Bronze



10310-80795A
AAMA 2604
New Dark Bronze

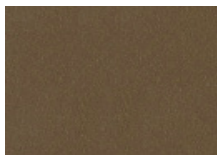


10012-91616
AAMA 2604
Black Tex

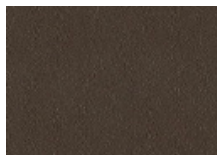
AAMA 2604 Anodized Stock Colors



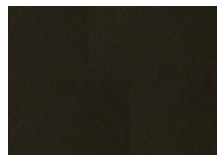
100110-01993
2604 Anodized
Champagne LR



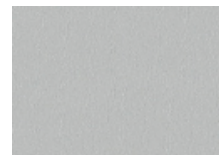
100110-01991
2604 Anodized
Lt Bronze LR



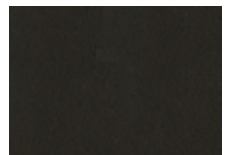
100110-01992
2604 Anodized
Dk Bronze LR



10010-92370
2604 Anodized
Dk Bronze DR



101110-01987
2604 Bonded
Anodized Clear II

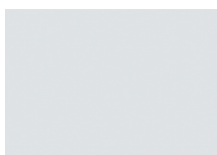


10010-92369
2604 Anodized
Black

AAMA 2604/2605 Stock Colors



10310-30250A
11410-30266R
Redwood



10710-91840A
11710-91898R
Window White



10510-91922A
11510-92253R
New Bone White



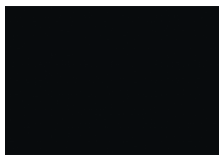
10410-12088A
11510-12203R
Matte Cream



10610-12080A
11610-12102R
Beige



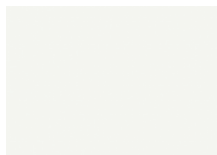
10620-92153A
11610-92254R
Satin Black



10410-81104A
11310-81125R
Window Bronze



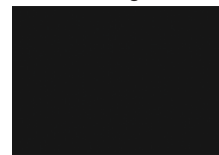
10410-61542
11410-61627R
Hartford Green



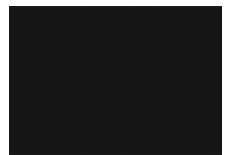
10810-91787
11710-92256R
Sky White II



10410-72503
11410-72756R
Slate Grey



10410-92435
11410-92252R
Matte Black



10940-92248
11710-92255R
Gloss Black

Specification Comparison Chart

Test Parameter	9000 Series AAMA 2603-17 1-Year	10000 Series AAMA 2604-17 5-Year	11000 Series AAMA 2605-17 10-Year
Pretreatment	Multi stage cleaning and pretreatment system	Multi stage cleaning and pretreatment system, chrome and non-chrome	Multi stage cleaning and pretreatment system, chrome and non-chrome
Pretreatment Coating Weight	Non specified	Chrome 30mg/ft ² minimum	Chrome 40mg/ft ² minimum
Film Thickness	2-4 mils	2-4 mils	2-4 mils
Repairability	See film touch up and repair procedures		
Sealant Compatibility	Meet performance requirements of AAMA 800 sealant specification		
Hardness	H-2H	H-2H	H-2H
	Values represent TCI product characteristics		
Dry Adhesion	No loss of adhesion		
Wet Adhesion	No loss of adhesion		
Boiling Water Adhesion	No loss of adhesion		
Impact Resistance	No film removal on min. 3 mm deformation		
Abrasion Resistance	N/A	Abrasion coefficient \geq 20 min	Abrasion coefficient \geq 40 min
Muriatic Acid	No change after 15 minute spot test		
Mortar Resistance	No adhesion loss or appearance change after 24 hour pat test		
Nitric Acid Resistance	N/A	5 DE max color change after 30 minute vapor exposure	
Detergent	No change or adhesion loss after 72 hour immersion		
Window Cleaner	N/A	No change or adhesion loss after 24 hour spot test	
Humidity Resistance	1,500 hours: no more than "few" blisters size 8, figure #4 ASTM D 714	3,000 hours: no more than "few" blisters size 8, figure #4 ASTM D 714	4,000 hours: no more than "few" blisters size 8, figure #4 ASTM D 714
Corrosion Resistance	1,500 hours of salt solution: minimum rating of 7 on scribe or cut edges: minimum blister rating of 8 in the field (ASTM D 1654) ASTM D 714	3,000 hours of salt solution: minimum rating of 7 on scribe or cut edges: minimum blister rating of 8 in the field (ASTM D 1654)	2,000 hours of cyclic corrosion per ASTM G85, Annex 5: minimum rating of 7 on scribe or cut edges: Minimum blister rating of 8 in the field (ASTM D 1654)
Outdoor Resistance	1 year south Florida: maintain film integrity; no adhesion loss, slight chalking or fading	5 years south Florida: maintain film integrity; 5 DE (Hunter) maximum color change; chalking (ASTM D 4214) \leq 8; gloss retention \geq 30%; erosion resistance less than 10% film loss	10 years south Florida: maintain film integrity; 5 DE (Hunter) maximum color change; chalking (ASTM D 4214) \leq 8; gloss retention \geq 50%; erosion resistance less than 10% film loss

9000 Series

AAMA 2603 Specification

TCI 9000 Series Polyester Systems have the broadest formulating range in color and gloss, and many will meet or exceed AAMA 2603 performance requirements. Products in this series have a 60° gloss range of 20-90° + and meet many decorative and functional requirements for chemical resistance, physical properties, color, gloss, and weatherability. High chroma colors are also available. Typical uses include aluminum extrusions, playground equipment, agricultural equipment, and machinery.



10000 Series

AAMA 2604 Specification

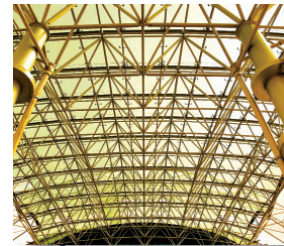
The TCI 10000 Series Superior Exterior Performance Polyester Systems are formulated to meet the requirements of the AAMA 2604 specification. Products in this series have a 60° gloss range of 30-90° + and are available in a wide selection of colors. Proper chrome or non-chrome pre-treatment is critical for product performance. A chrome conversion coating must be applied at 30 mg/ft² minimum. The non chrome must be applied per supplier's specification. A TCI technical representative must audit each application system to ensure products will meet the 2604 specification.



11000 Series

AAMA 2605 Specification

The TCI 11000 Series Highest Exterior Performance Organic Systems are formulated to meet the requirements of the AAMA 2605 specification. Products in this series have a 60° gloss range of 35-80° + and are available in many colors. Proper amorphous chromium phosphate or amorphous chromate pretreatment is critical for product performance. The chrome coating weight must be applied at 40 mg/ft² minimum. A TCI technical representative must audit each application system to ensure products will meet the 2605 specification.



TruDurance

TCI Certified Applicator

TCI field technicians are trained to audit all aspects of the powder coating operation to determine the customer's ability to achieve AAMA requirements. TCI runs a variety of tests that evaluate the performance of our powder coatings in the customer's process and continues with bi-annual renewal audits to ensure the process parameters have not changed without notification. For TCI Certified Applicators, warranties are available for 2603, 2604, and 2605 applications.



300 Martin Marietta Drive, Americus, GA 31719
Phone: 800.533.9067 Fax: 800.265.0404 Web: www.tcipowder.com